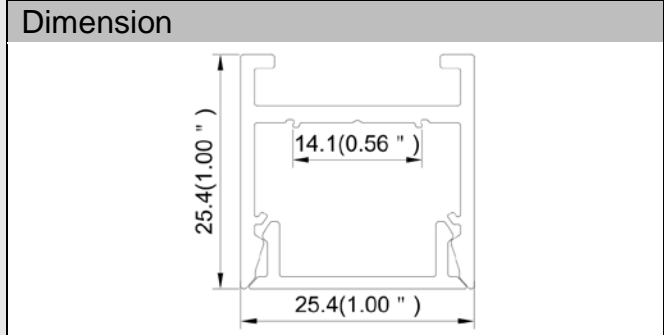
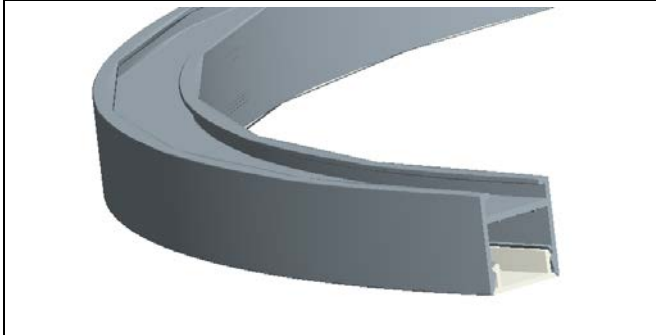


Model : ALP25C-R

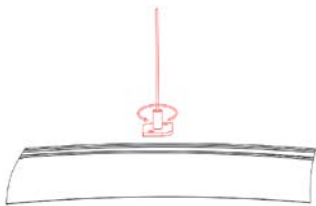


Specification	
Aluminum Profile	6065-T5
Diffuser	PC diffused cover
Diameter	600 / 900 / 1200 / 1800mm
Weight	0.458kg/m
Max Strip Width	12mm
Max Power	20W/m
Beam angle	100°
Finish	Silver /Black anodized , Powder coated white /black or other colors
Installation	Pendant / ..

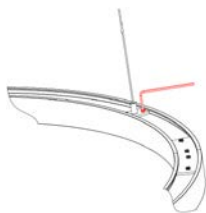
Accessories			
Connector(Steel)	End Cap Without Hole(ABS)	Steel Wire	LED Strip

Steps of Installation		
<p>1. Connecting the curved profile by connector</p>	<p>2. Stick the LED board inside the profile</p>	<p>3. Press the curved cover into the profile</p>

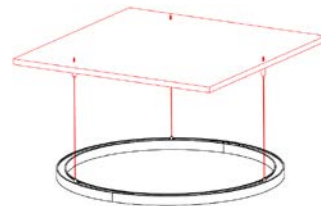
4. Move the slider to suitable position



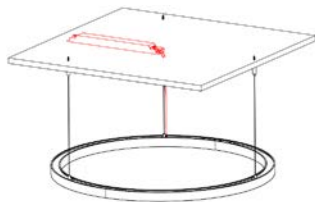
5. Lock the slider



6. Hang the circle by the steel wire



7. Connecting the driver



8. Installation completed

