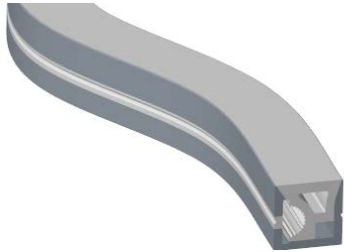
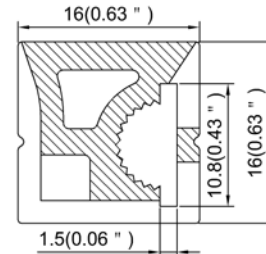


Model : S1616-S



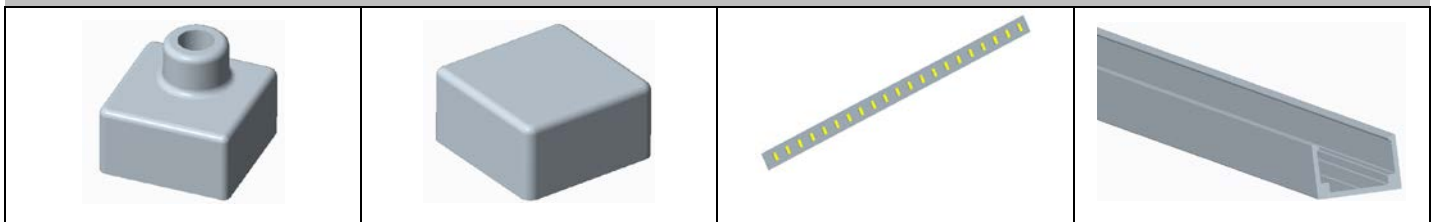
**Dimension**



**Specification**

Aluminum Profile	/
Diffuser	Silicon Co-extrusion
Length	5000mm
Weight	0.24 kg/m
Max LED Strip Width	10mm
Max Power	10W/m
Beam angle	/
Finish	White
Installation	Surface

**Accessories**

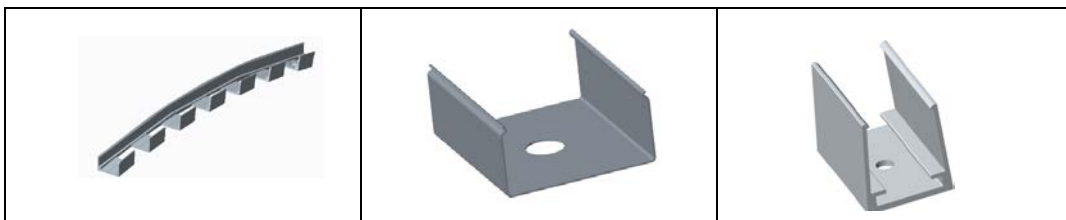


End cap with hole(Silicon)

End cap without hole(Silicon)

LED Strip

Profile for mounting(Metal)


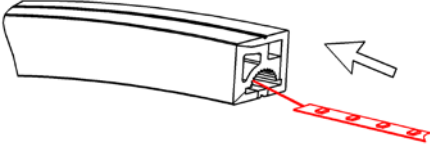
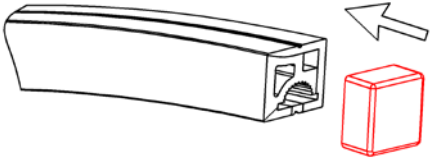
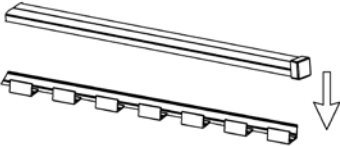
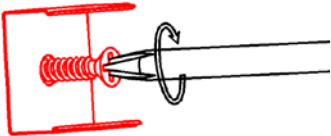
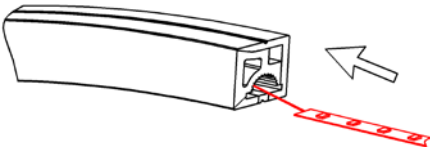
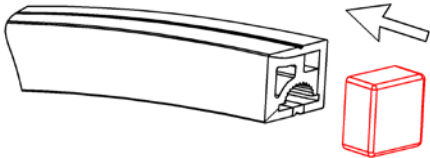
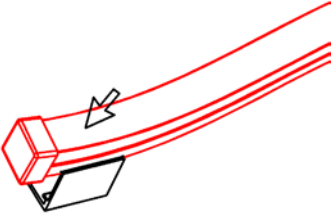


Profile for mounting (Metal)

Mounting Clip (Metal)

Aluminum Profile for mounting

**Steps of Installation**

<p>1. Mounting the bendable profile as follow</p> 	<p>2. Install the LED strip</p> 	<p>3. Insert the end caps</p> 
<p>4. Installing the fixture with mounting parts what you need.</p> 		
<p>1. Mounting the bendable profile as follow</p> 	<p>2. Install the LED strip</p> 	<p>3. Insert the end caps</p> 
<p>4. Installing the lamp</p> 	<p>5. Installation completed</p> 