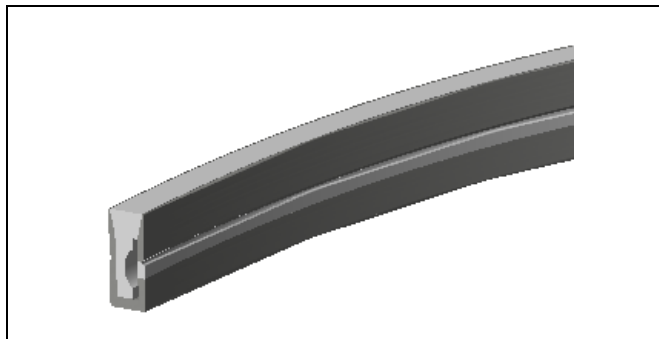
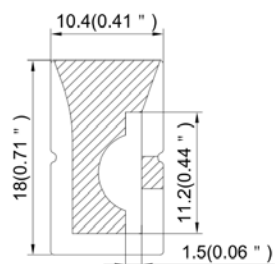


Model : S1018-S



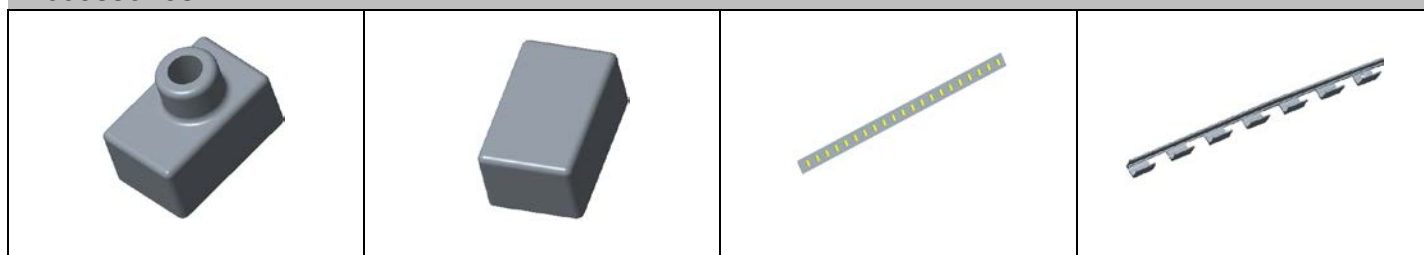
Dimension



Specification

Aluminum Profile	/
Diffuser	Silicon Co-extrusion
Length	5000mm
Weight	0.214kg/m
Max LED Strip Width	10mm
Max Power	10W/m
Beam angle	/
Finish	White
Installation	Surface

Accessories



End cap with hole(Silicon)

End cap without hole(Silicon)

LED Strip

Profile for mounting (Metal)

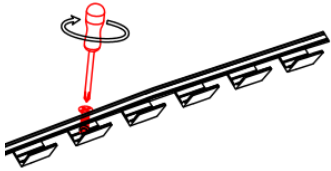


Aluminum Profile for mounting

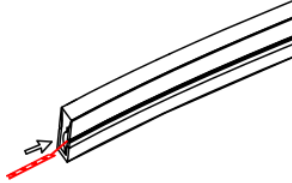
Steps of Installation

The first option

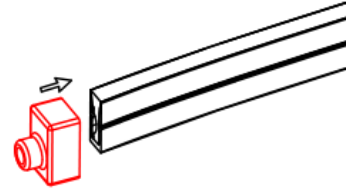
1. Install the mounting clip .



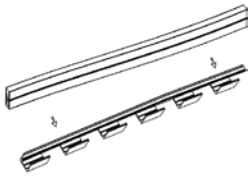
2. Stick the LED strip



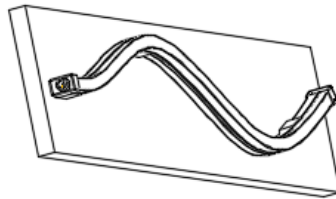
3. insert the end caps



4. Install the fixture with mounting clip what you need.

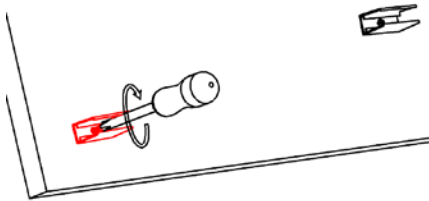


5. Installation completed

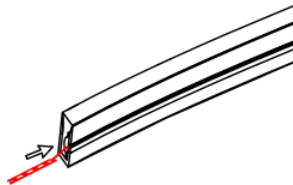


The second option

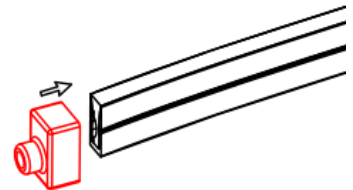
1. Install the mounting clip .



2. Stick the LED strip



3. insert the end caps



4. Install the lamp



5. Installation completed

