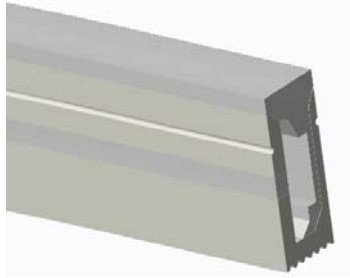
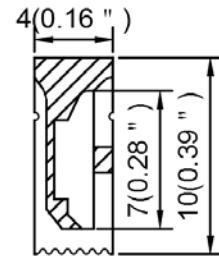


Model : S0410-S



Dimension



Specification

Aluminum Profile	/
Diffuser	Silicon Co-extrusion
Length	5000mm
Weight	0.037 kg/m
Max LED Strip Width	6 mm
Max Power	8 W/m
Beam angle	100°
Finish	White
Installation	Surface

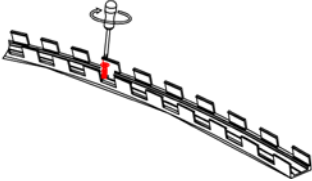

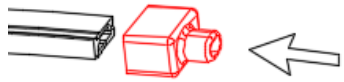
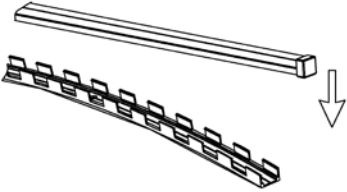
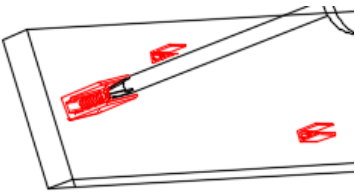

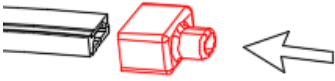
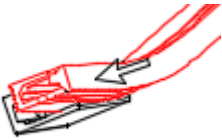
Accessories

End cap with hole(ABS)	End cap without hole(ABS)	LED Strip	Profile for mounting(metal)

Bendable profile for mounting
(metal)

Aluminum profile for mounting

Steps of Installation

<p>The first option</p>		
<p>1. Install the mounting parts. (show as above)</p> 	<p>2. Insert the LED strip</p> 	<p>3. Insert the end caps</p> 
<p>4. Installing the fixture with mounting parts what you need.</p> 		
<p>The second option</p>		
<p>1. Install the mounting clip with screw</p> 	<p>2. Insert the LED strip</p> 	<p>3. Insert the end caps</p> 
<p>4. Install the lamp</p> 	<p>5. Installation completed</p> 