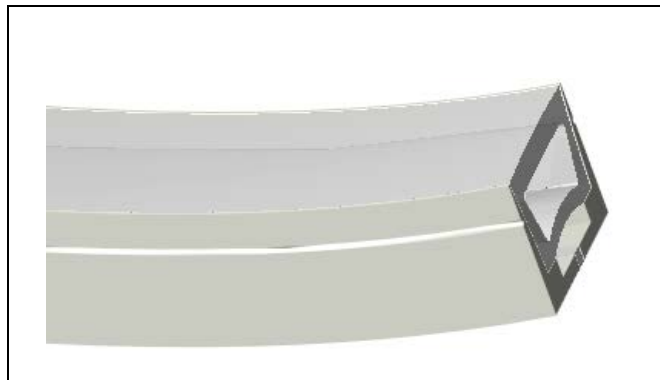
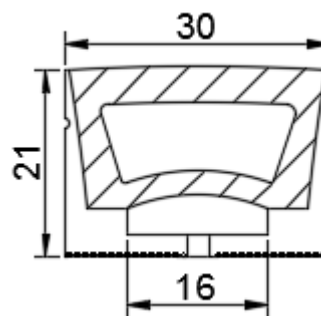


Model : S3021-T



Dimension



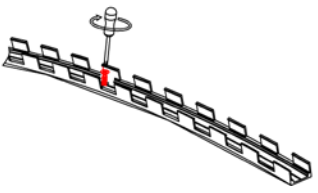
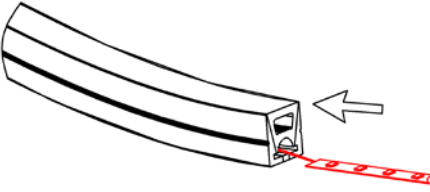
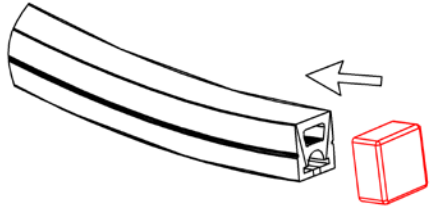
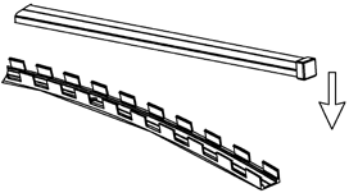
Specification

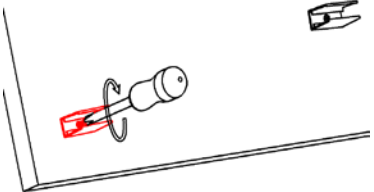
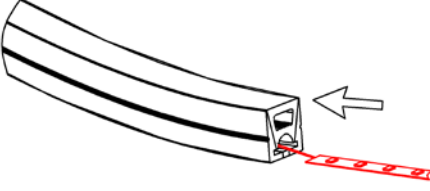
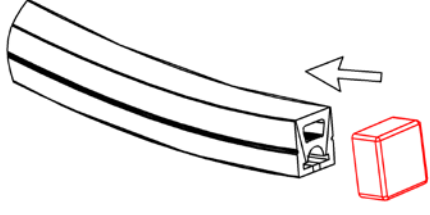
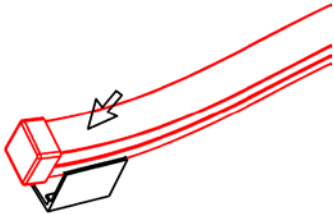
Aluminum Profile	/
Diffuser	Silicon Co-extrusion
Length	5000mm
Weight	0.528kg/m
Max LED Strip Width	14mm
Max Power	14W/m
Beam angle	100°
Finish	White
Installation	Surface

Accessories

End cap with hole(ABS)	End cap without hole(ABS)	LED Strip	Profile for mounting(metal)
Bendable profile for mounting (metal)	Mounting clip (metal)	Aluminum profile for mounting	

Steps of Installation

<p>The first option</p>		
<p>1. Install the mounting parts. (show as above)</p> 	<p>2. Stick the LED strip</p> 	<p>3. Click the end caps</p> 
<p>4. Installing the fixture with mounting parts what you need.</p> 		

<p>The second option</p>		
<p>1. Install the mounting clip</p> 	<p>2. Stick the LED strip</p> 	<p>3. Click the end caps</p> 
<p>4. Install the lamp</p> 	<p>5. Installation completed</p> 