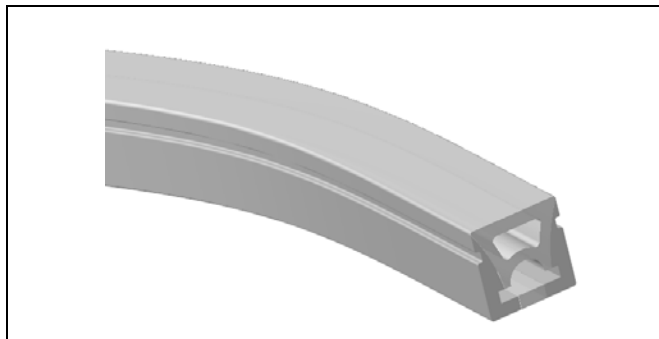
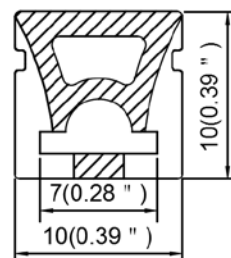


Model : S1010-T



**Dimension**



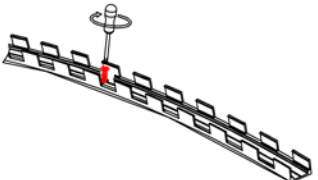
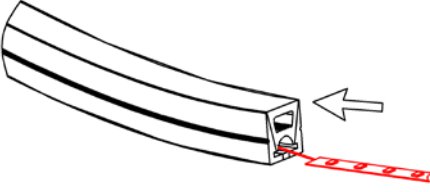
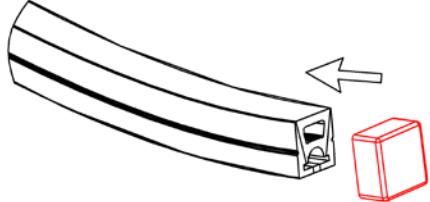
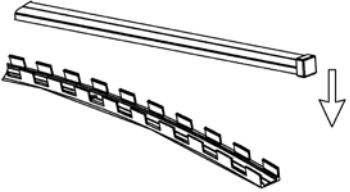
**Specification**

Aluminum Profile	/
Diffuser	Silicon Co-extrusion
Length	5000mm
Weight	0.091 kg/m
Max LED Strip Width	6mm
Max Power	10 W/m
Beam angle	100°
Finish	White
Installation	Surface

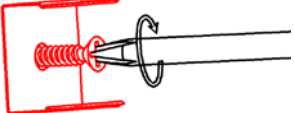
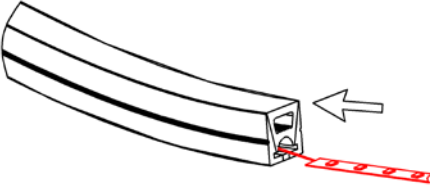
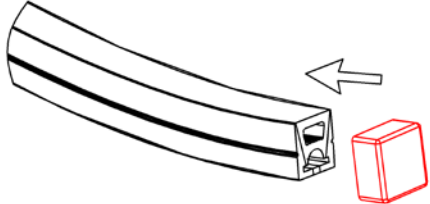
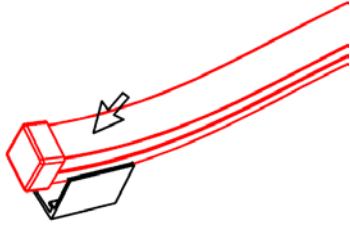
**Accessories**

End cap with hole(ABS)	End cap without hole(ABS)	LED Strip	Profile for mounting(metal)
Bendable profile for mounting (metal)	Mounting clip (metal)	Aluminum profile for mounting	

**Steps of Installation**

<p>1. Install the mounting parts. (show as above)</p> 	<p>2. Stick the LED strip</p> 	<p>3. Click the end caps</p> 
<p>4. Installing the fixture with mounting parts what you need.</p> 		

**Method 2**

<p>1. Install the mounting clip</p> 	<p>2. Stick the LED strip</p> 	<p>3. Click the end caps</p> 
<p>4. Install the lamp</p> 	<p>5. Installation completed</p> 