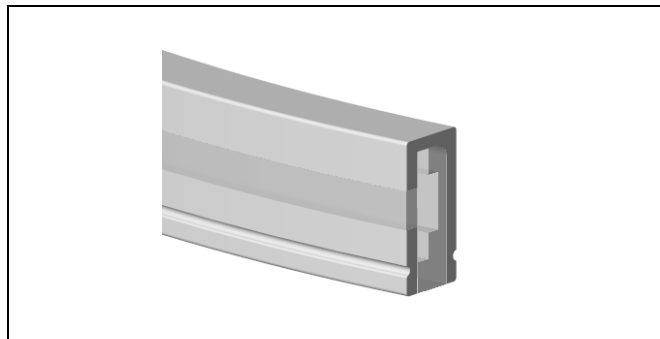
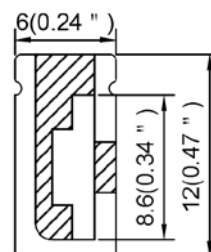


Model : S0612-S



Dimension



Specification

Aluminum Profile	/
Diffuser	Silicon Co-extrusion
Length	5000mm
Weight	0.072 kg/m
Max LED Strip Width	8mm
Max Power	8 W/m
Beam angle	100°
Finish	White
Installation	Surface

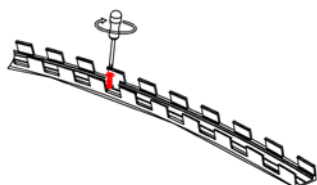
Accessories

End cap with hole	End cap without hole	LED Strip	Profile for mounting(metal)
Bendable profile for mounting (metal)	Mounting clip (metal)	Aluminum profile for mounting	

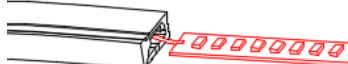
Steps of Installation

The first option

1. Install the mounting parts. (show as above)



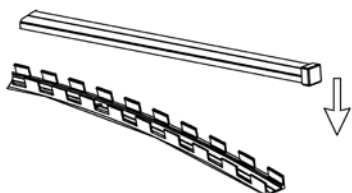
2. Stick the LED strip



3. insert the end caps

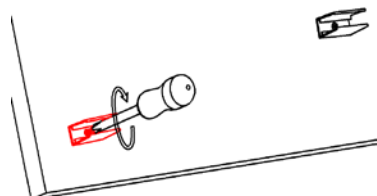


4. Installing the fixture with mounting parts what you need.

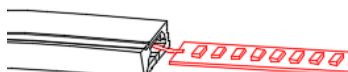


The second option

1. Install the mounting clip with screw



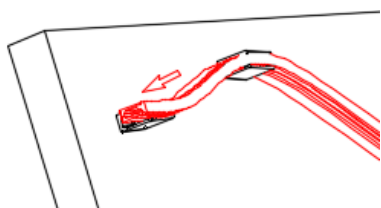
2. Insert the LED strip



3. Insert the end caps



4. Install the lamp



5. Installation completed

