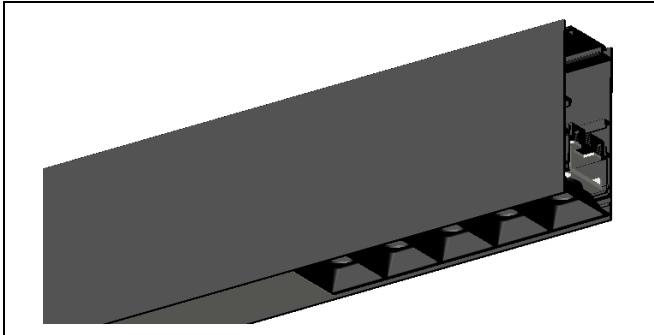
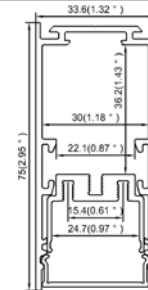


Model : LS30



Dimension



Specification

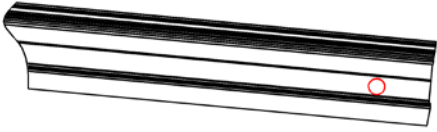
Aluminum Profile	6063-T5
Diffuser	PC frosted cover
Length	2000mm / 2500mm / 3000mm
Weight	1.498kg/m(Profile only)
Max LED Strip Width	24mm
Max Power	30W/m
Beam angle	100° (PC frosted cover)
Finish	Silver / Black anodized , Powder coated white / black or other colors
Installation	Recessed

Accessories

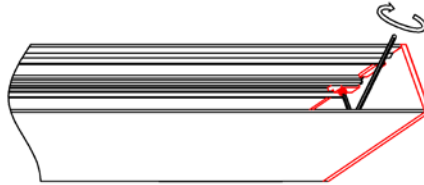
End Cap (Metal)	LED Module	PC Frosted Cover	Blind Aluminum Cover
Reflector: 15° 30° 45°	Hanging Cord	Safety Cable	Hanging Clip
Inside Clip	180° Connector(Metal)	90° Vertical Connector(Metal)	

Steps of Installation

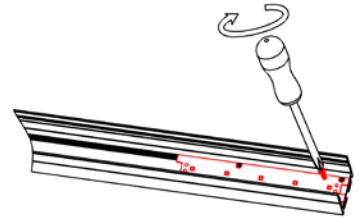
1. Drill the hole for power cable .



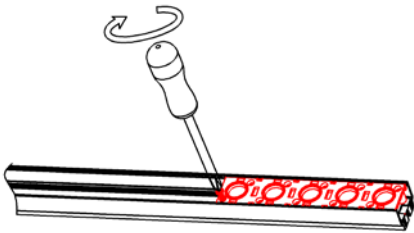
2. Install the end caps with screws



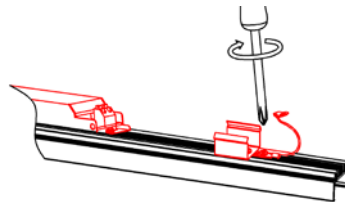
3. Fix the LED module with screws



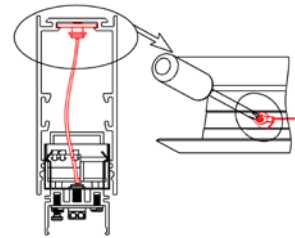
4. Fix the reflector part with screws



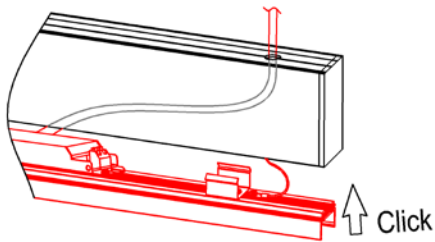
5. Install the driver/safety cable/ inside clip



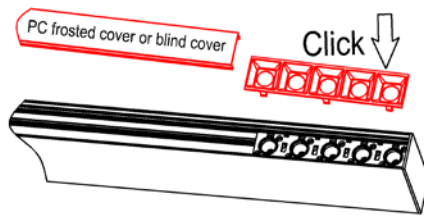
6. Lock the safety cable with screw tightly



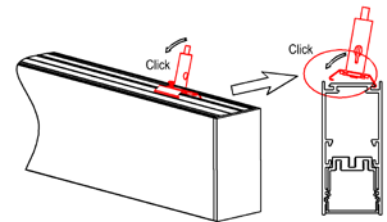
7. Click the assembled parts



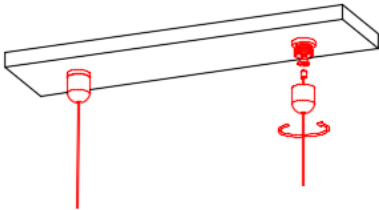
8. Click the reflector parts and blind cover



9. Click the hanging clip assembled



10. Mount the steel wire on the ceiling



11. Adjust the hanging cable length .

