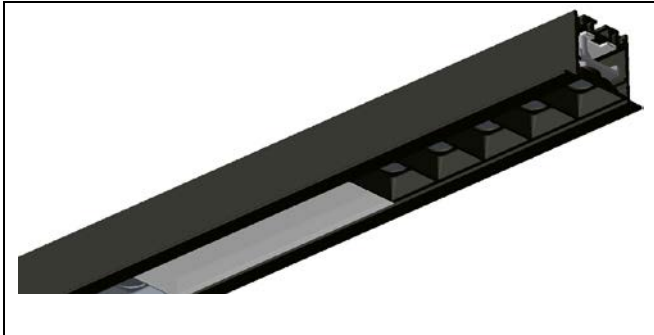
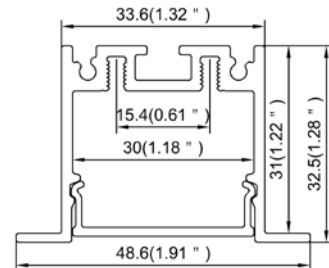


Model : LS30-T



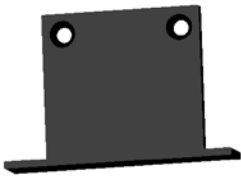
Dimension



Specification

Aluminum Profile	6063-T5
Diffuser	PC frosted cover
Length	2000mm / 2500mm / 3000mm
Weight	0.711kg/m (profile only)
Max LED Strip Width	30mm
Max Power	30W/m
Beam angle	100° (PC frosted cover)
Finish	Silver / Black anodized , Powder coated white / black or other colors
Installation	Recessed

Accessories



End Cap (Metal)



LED Module



PC Frosted Cover



Blind Aluminum Cover



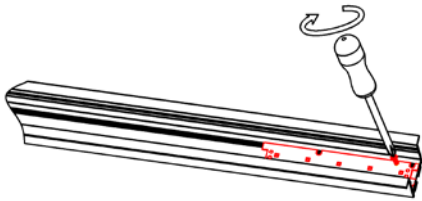
Spring Clip



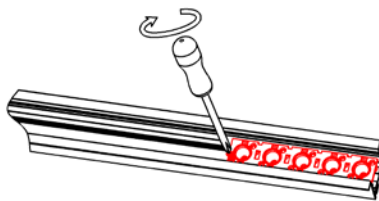
Reflector: 15° 30° 45°

Steps of Installation

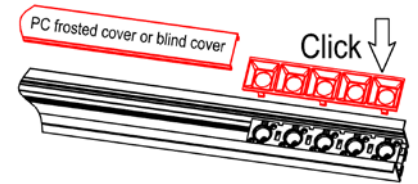
1. Fix the led module with screws



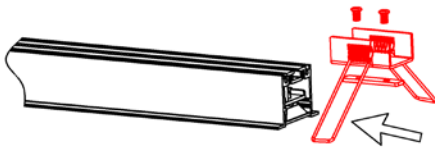
2. Fix the reflector with screws



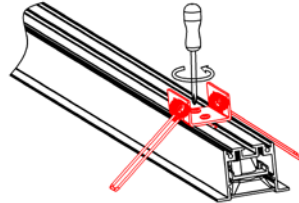
3. Click the suited cover



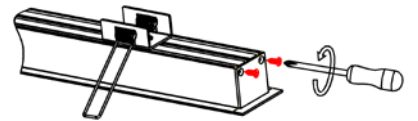
4. Slide the spring clip part to position



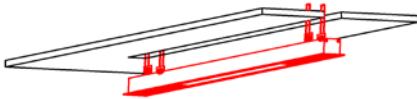
5. Lock the spring clip with screws



6. Fix the end caps with screws



7. Push the fixture into the ceiling



8. Installation completed

