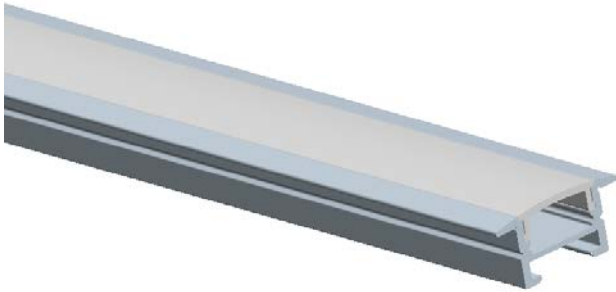
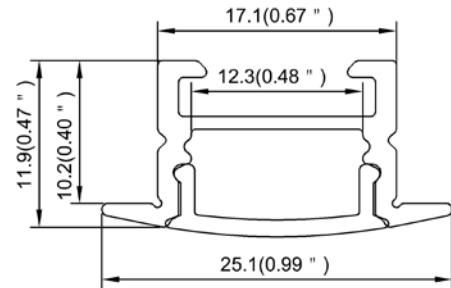


Model : ALP143



**Dimension**



**Specification**

Aluminum Profile	6063-T5
Diffuser	PC diffused cover / PMMA opal cover/ PMMA semi-clear cover /PMMA clear cover
Length	2000mm / 2500mm / 3000mm
Weight	0.210 kg/m
Max LED Strip Width	12mm
Max Power	15W/m
Beam angle	100°
Finish	Silver / Black anodized , Powder coated white / black or other colors
Installation	Recessed

**Accessories**



End Cap With Hole(ABS)



End Cap Without Hole(ABS)



LED Strip



Spring Clip(Metal)



180° Connector(Metal)



90° Connector(Metal)



90° Vertical Connector(Metal)



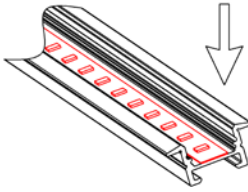
135° Connector(Metal)



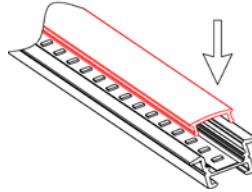
135° Vertical Connector(Metal)

**Steps of Installation**

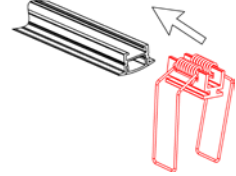
1. Stick the LED strip



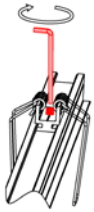
2. Press the diffused cover



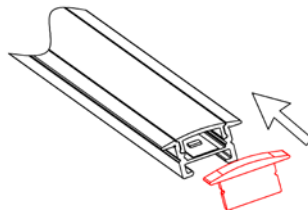
3. Fix the spring clip



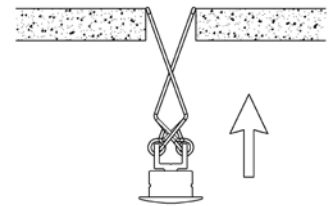
4. Lock the Allen screw



5. Click the end caps



6. Insert the fixture to the plasterboard



7. Installation completed

