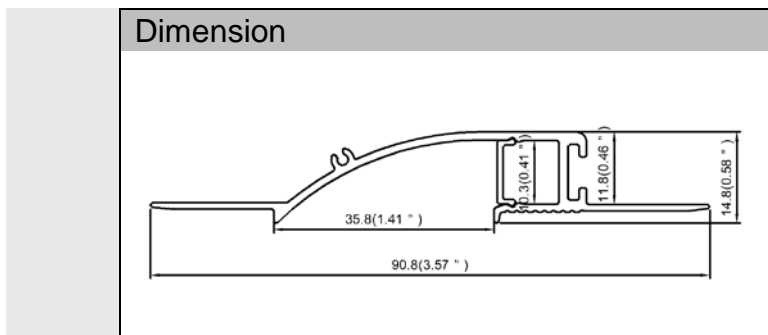


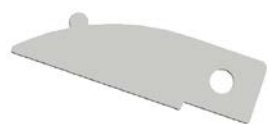
Model : ALP186



Specification

Aluminum Profile	6063-T5
Diffuser	PC diffused cover
Length	2000mm / 2500mm / 3000mm
Weight	0.465 kg/m
Max LED Strip Width	10mm
Max Power	15W/m
Beam angle	100°
Finish	Silver / Black anodized , Powder coated white / black or other colors
Installation	Recessed

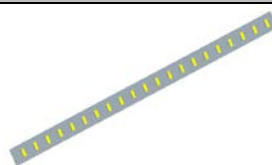
Accessories



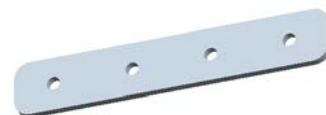
End Cap With Hole(ABS)



End Cap Without Hole(ABS)



LED Strip



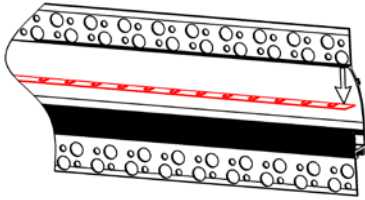
180° Connector(Metal)



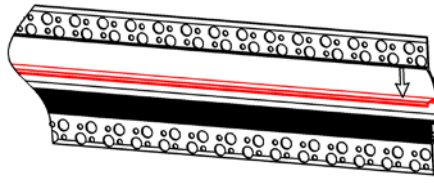
90° Connector(Metal)

Steps of Installation

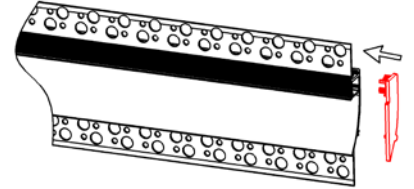
1. Stick the LED strip



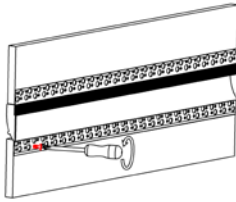
2. Press the diffused cover



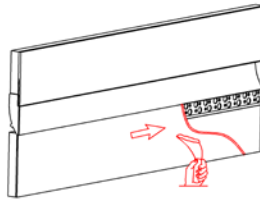
3. Mounting the profile with screws



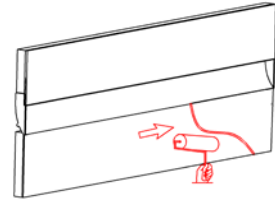
4. Mounting the profile with screws



5. Plaster on the fixture & drywall



6. Painting on the fixture & drywall.



7. Installation completed.

